

“As a team, we are **committed** to ensuring that all our service users receive the **care** and **support** they need to live an **independent, safe** and **positive** life”

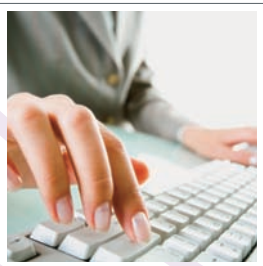
Positive Living has regional offices in various locations in the country. If you would like further information on Positive Living or details of your local office, please contact:

**Head office**

Tel 01494 680808

Fax 01494 678458

Website [www.positivelivingltd.co.uk](http://www.positivelivingltd.co.uk)



**To make a referral to:**

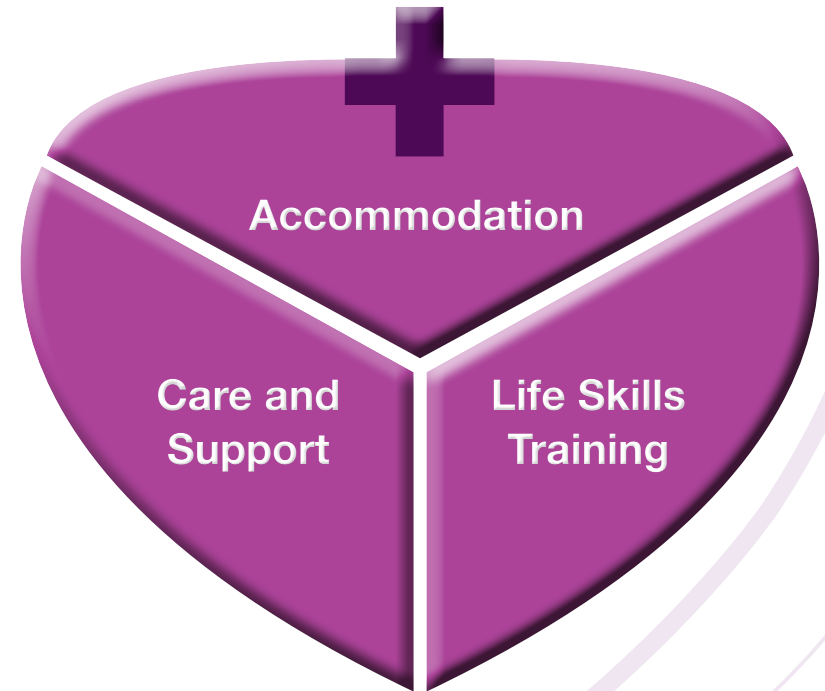
Positive **Support** Positive **Care** Positive **Homes**

Call 01494 680808; or **download** the referral forms from our website at [www.positivelivingltd.co.uk](http://www.positivelivingltd.co.uk)

**Positive Living Limited** Registered with the Care Quality Commission



Accommodation Care & Support in the Community



Specialists in offering a range of placement options for community living

Positive **Living** Positive **Support** Positive **Care** Positive **Homes**

Positive Living offer a range of packages that ensure service users' care and support needs are always met.

## Positive Living is registered with the Care Quality Commission

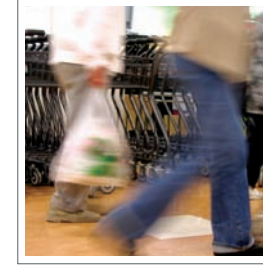
Positive Living will work with service users on all aspects of daily living skills such as:

- Domestic tasks (shopping, cooking, laundry, cleaning etc)
- Finance and budgeting
- Claiming appropriate benefits
- Seeking employment
- Access to training courses and further education
- Access to medical and dental care
- Maintaining links with friends, family and the local community
- Any other assistance that may be necessary to lead a fulfilling life

As a registered organisation, we are also able to provide care for our service users that includes:

- Administering Medication • Bathing • Toileting • Dressing • Cooking
- Cleaning and Shopping

**Positive Living Limited** Registered with the Care Quality Commission



Positive Living offers a fully inclusive range of care and support packages. These may include anything from 24hr care and support to just a couple of visits each week, therefore offering maximum flexibility to the placing authority.

### We offer:

- Accommodation • A range of care and support packages
- 24hr access to staff by freephone • Progress and other service user reports
- Attendance at meetings
- Administration and documentation

